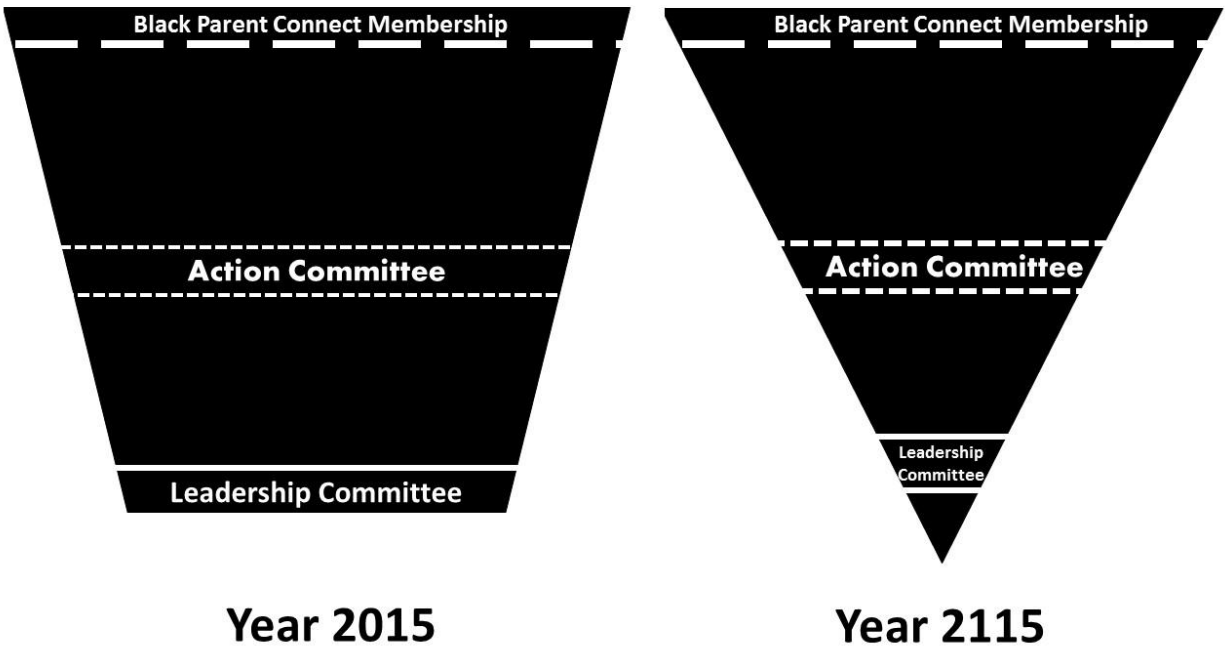
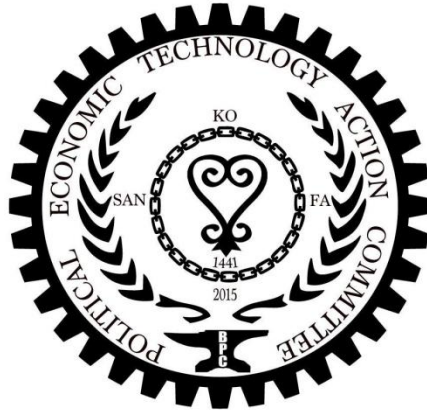


# 2015 PETAC FOUNDING ORGANIZATIONAL STRUCTURE



## 3 MEMBERSHIP TYPES

- |                               |          |
|-------------------------------|----------|
| ● Black Parent Connect Member | Majority |
| ● Action Committee            | 100      |
| ● Leadership Committee        | 13       |

## Leadership Committee

### (6) Executive Team: President, Vice President, Treasurer, Asst Treasurer, Secretary, Asst Secretary

#### (7) Chaplain

- No experience required
- Able to invoke prayer, lead worship experience and quickly reference and apply God's word
- **Measure of Excellence:** Feedback from membership

#### (8) Parliamentarian

- 1 year of experiencing utilizing Roberts Rules of Order in an organization
- Able to maintain orderly meetings, promote and document protocol, willing to research and communicate clearly
- **Measure of Excellence:** Feedback from membership

#### (9) Political Director

- Local and national election and/or voting experience
- Strong research and follow up skills
- **Measure of Excellence:** Increased registered voters, political awareness and activity of membership

#### (10) Economic Director

- MBA or 3 years of corporate, entrepreneurial or nonprofit experiencing
- Able to analyze financial statements and explain economic concepts in basic terms
- **Measure of Excellence:** Increased knowledge, economic choices and wealth of membership

#### (11) Technology Director

- 2 years of computer, engineering, technology or scientific research experience
- Able to anticipate and prepare the organization for basic and advanced trends in technology
- **Measure of Excellence:** Increased awareness, usage and adoption rates of members

#### (12) Communication Director

- 1 year of experience
- Excellent verbal, written and social media message delivery skills
- **Measure of Excellence:** Feedback from membership

#### (13) Legal Consultant

- 3 years of legal education, paralegal or paraprofessional experience
- Strong research and report writing skills. Able to interpret and communicate applicable laws and develop simple framework for operating agreements for organization and individuals
- **Measure of Excellence:** External correspondence received from political representatives and/or corporate representatives

### Action Committee

- Voting on issues and concerns of PETAC
- Voting on officers and leadership committee of PETAC
- Emailing
- Writing letters
- Attending meetings
- Attending retreats
- Researching facts

### Black Parent Connect Member

- Recruiting like-minded parents to join BLACK PARENT CONNECT
- Disseminating relevant information to family members
- Implementing activities of PETAC
- Sharing ideas and concerns with PETAC
- Responding to global opportunities and working on areas for improvement
- Supporting PETAC affiliated vendors on a monthly basis
- Commit to raising outstanding children (see VOICE OF BABY)

